



Models JML-24X, JML-18X, & JML-12X Material Lift

OPERATING INSTRUCTIONS AND PARTS MANUAL



Part Number: M-JT1-2411
Edition 1 10/2025
©2025, JET
All rights reserved U.S.A.

Table of Contents

WARNING

Read and understand this entire owner's manual before operating this material lift. Failure to comply with instructions and safety warnings in this manual and on the lift may cause serious injury.

1	Introduction	1
	1.1 JET Tools	1
	1.2 Product Identification	1
	1.3 Product Registration	1
	1.4 Material Lift Online Information	1
	1.5 Operator and Supervisor Information	2
	1.6 Material Lift Operating Modes	2
	1.7 Signal Word Definitions	2
	1.8 Intended Use	2
2	Safety Information	3
3	Product Identification	5
4	Specifications	7
	4.1 Product Specifications	7
	4.2 Product Dimensions - Operation Modes	8
	4.3 Product Dimensions - Stowed Modes	8
	4.4 Product Dimensions - Counterbalance Accessory	8
	4.5 Load Ratings and Placement	9
5	Unpacking & Assembly	11
6	Lifting Operation	12
	6.1 Pre-Operation Inspection	12
	6.2 Preparing Material Lift	12
	6.3 Winch Operation	16
	6.4 Standard Lift Mode	16
	6.5 Counterbalance Lift Mode	17
	6.6 Casters	18
	6.7 Mast Safety Brake System	18
	6.8 Accessories	19
7	Storage & Transport	20
	7.1 Placing Lift in Vertical Storage Mode	20
	7.2 Placing Lift in Horizontal Transport Mode	22
	7.3 Lifting and Moving Material Lift with Forklift	25
	7.4 Loading Material Lift into Truck	25
8	Maintenance	26
	8.1 General Maintenance	26
	8.1.1 Before Each Use	26
	8.1.2 Winch Maintenance	26
	8.1.3 Every Six Months	26
	8.1.4 Annually	26
9	Troubleshooting	27
10	Replacement Parts	29
11	Warranty	35

1 Introduction

1.1 JET TOOLS®

Congratulations on purchasing this quality JET product. JET Tools is committed to being the supplier you can depend on for the highest quality products, superior innovation, and outstanding customer service. For more than 50 years, JET tool products have been used by manufacturing professionals in plants, machine shops, and workshops across the United States. We are also proud to serve the prosumer and hobbyist workshops everywhere.

This manual covers the safe operation and maintenance procedures for the JET Material Lift. This manual contains instructions on safety precautions, assembly, general operating procedures, maintenance instructions, and replacement parts. This tool is designed and constructed to provide consistent, long-term operation if used in accordance with instructions contained in this manual.

If you have any questions or comments, please contact either your local supplier or JET Tools. JET Tools can also be reached at our web site: www.jettools.com.

Contact Us:

JET Tools
427 New Sanford Road
La Vergne, TN 37086
Phone: 800.274.6848
www.jettools.com

1.2 PRODUCT IDENTIFICATION

JET Material Lift model is serialized for quality control, production traceability, and warranty enforcement. When ordering parts or filing a warranty claim, please refer to the aluminum identification tag with engraved serial number, model number, and stock number. Fill in the information below for easy recall when needed.

Model Number:	_____
Serial Number:	_____
Date Purchased:	_____
Where Purchased:	_____

1.3 PRODUCT REGISTRATION

There are three ways you can register this product with JET Tools.

1. Fill out and mail the registration card provided with this product.
2. Register online at jettools.com/product-registration/.
3. Scan the QR code below. There, you will find a product registration link.



1.4 MATERIAL LIFT ONLINE INFORMATION

Scan the QR code below to find more information about JET's family of material lifts.



1.5 OPERATOR AND SUPERVISOR INFORMATION

WARNING

Read and understand this entire owner's manual before operating this material lift. Failure to comply with instructions and safety warnings in this manual and on the lift may cause serious injury.

This manual provides information for handling, installing, operating, and maintaining your lift. The product specifications and contents of this manual are subject to change without notice due to improvements in the machinery or changes in regulatory standards and codes.

Provide operators with sufficient training and education regarding the machine and its use prior to lift operation. Do not allow unqualified personnel to operate the lift.

For quick and easy reference, keep this manual inside the provided owner's manual tube, located at the bottom rear of the mast. See *Section 3 PRODUCT IDENTIFICATION*.

It is the responsibility of the supervisor and lift operator to follow all health, safety, and accident prevention standards and laws governing the use of this product in the respective municipality, state, and country where it will be operated.

1.6 MATERIAL LIFT OPERATING MODES

This material lift can operate in two different modes and must be specifically setup for each mode.

Standard Lift Mode: The pivoting/rotating legs are oriented forward to balance and support the load. See *Section 6 Lifting Operation* for detailed information on preparing and using the lift in standard lift mode.

Counterbalance Lift Mode: The pivoting/rotating legs are oriented to the rear. This allows the operator to position and lift loads while being close to a forward wall or obstruction. When in the counterbalance lift mode, you must only use the JET counterbalance weight assembly. Not providing counterbalance weight using only the JET counterbalance weight assembly will make the material lift unstable and will cause the lift and the load to topple over. See *Section 6 Lifting Operation* for detailed information on preparing and using the lift in counterbalance lift mode.



Standard Lift Mode

Counterbalance Lift Mode with JET Counterbalance Weight Assembly Attached

Figure 1-1: Operating Modes

1.7 SIGNAL WORD DEFINITIONS

DANGER

Indicates a hazardous situation that, if not avoided, will result in death or serious injury.

WARNING

Indicates a hazardous situation that, if not avoided, could result in death or serious injury.

CAUTION

Indicates a hazardous situation that, if not avoided, could result in mild to moderate injury and/or property damage.

NOTICE

Indicates information considered important but not hazard related.

1.8 INTENDED USE

This lift is to be used for lifting materials only. The materials to be lifted are to stay under the maximum load ratings as outlined in *Section 4.5 LOAD RATINGS AND PLACEMENT*.

Follow all safety information and instructions in this manual for safe and proper operation of this material lift.

All operators are expected to have the needed physical ability to safely and properly operate this material lift.

2 Safety Information

BEFORE USE

1. Thoroughly read and understand this entire instruction manual for safety information and assembly, operation, and maintenance instructions. Failure to follow the information provided in this manual may cause serious injury or death.
2. This material lift is designed and intended for use by properly trained and experienced personnel only. Learn how to operate this lift properly and safely. If you are not familiar with the proper and safe operation of this lift, do not use it. Follow proper and safe lifting practices.
3. Do not use this material lift for purposes other than its intended use, as outlined in this owner's manual. If used for other purposes, JET disclaims any real or implied warranty and holds itself harmless from any resulting injury or property damage.
4. Always take time to study the job to be performed and choose the safest method. Do not place yourself or other people in an unsafe position.
5. Always inspect the material lift and cable for damage prior to use. If lift is damaged, repair before use. Do not attempt to lengthen or repair cables. If cable is kinked, frayed, worn, or damaged, replace before use. Replace cable with a factory replacement cable only. Do not use any other type of cable.
6. Make sure all warning and instructional labels are in place and legible.
7. Perform non-load operation tests before each use.
8. Only use replacement parts and accessories approved and provided by JET.

WORK AREA SAFETY

1. Keep bystanders a safe distance from the work area and material lift path while in use. Keep children away. Do not allow children to access or operate this material lift.
2. Do not lift, lower, or support loads over the top of people.
3. Never allow anyone under an elevated load.
4. Use this material lift only on solid and level surfaces that can withstand the weight of the material lift and load. Do not use on inclines.
5. Keep work area and material lift path clear of debris and clutter.
6. This lift is not insulated from electrical current. If it contacts energized power lines, severe injury or death can occur if you are touching the lift. Keep away from the

lift if it contacts energized power lines. Shut off power lines immediately and safely move the lift away from the hazard.

7. Maintain a safe distance from electrical power lines and machinery in accordance with government regulations, codes and industry standards. Allow for electrical line sway and sag and be aware of strong or gusty winds. Refer to OSHA Standard 1926.1408.

PERSONAL SAFETY

1. Wear proper clothing and safety gear. When operating this material lift, wear a hard hat, safety glasses, steel-toe shoes, and gloves.
2. Always maintain your balance and firm footing when operating the material lift.
3. Give your work undivided attention. Looking around, carrying on a conversation and "horse-play" are careless acts that can result in serious injury.
4. The material lift is heavy. Use proper lifting practices and multiple people to lift or lower the mast assembly to-or-from the horizontal transport mode or when lifting and positioning into a truck or trailer.

FALL HAZARDS

1. Do not use this material lift to lift, lower, support, or transport people.
2. Do not stand on the load forks.
3. Do not climb on the mast or material lift.
4. Do not use this material lift to support ladders for climbing or hoisting.

TIP-OVER HAZARDS

1. Do not exceed the rated load capacity of the material lift. Do not operate material lift unless load is centered, balanced, and secured on the forks. Follow the information in *Section 4.5 LOAD RATINGS AND PLACEMENT*.
 2. Do not raise a load unless the stabilizing legs are locked in lifting position (wide) and all casters are in full contact with the floor or ground.
 3. Do not raise a load unless the machine is on a solid and level surface that can withstand the weight of the material lift and load. Make sure the surface does not have drop-offs, holes, bumps, or debris. Make sure the surface is not slippery.
 4. When operating in counterbalance lift mode, you must use ONLY the JET counterbalance weight assembly. Do not use any other object or method to apply weight to the
-

material lift legs. Properly locate the JET counterbalance assembly according to the counterbalance labels and as instructed in *Section 6.5 COUNTERBALANCE LIFT MODE*. Not providing counterbalance weight using ONLY the JET counterbalance weight assembly will make the material lift unstable and will cause the lift and the load to topple over.

5. Do not move the material lift to different locations while a load is attached and lifted or with the mast raised. Lower mast to the lowest position and remove load before moving to another location.
6. Make sure pivoting/rotating legs and stabilizer legs are positioned correctly and locked before lifting a load.
7. Do not release locking leg latches or disengage stabilizing leg locking pins while the lift is under load.
8. Do not climb on the material lift or place a ladder or any type of side load on the mast.
9. Do not use blocks to level the lift.
10. Do not operate this machine in strong or gusty winds.
11. Do not use this lift on a moving surface or on a vehicle, moving or stationary. Do not use a forklift to raise an operating material lift to gain additional load height.

OPERATIONAL SAFETY

1. Do not exceed the rated load capacity of the material lift. See *Section 4.5 LOAD RATINGS AND PLACEMENT*.
2. Do not operate material lift unless load is centered, balanced, and secured on the forks. Follow the information in *Section 4.5 LOAD RATINGS AND PLACEMENT*.
3. Properly prepare the material lift before placing a load on the lifting forks. Extend and lock the stabilizers. Adjust height of stabilizer wheels to make full contact with the floor. Lock all locking casters. Ensure the mast is in the upright position and the mast position locking pin is fully engaged. Ensure the leg latches are locked. See *Section 6 Lifting Operation*.
4. Check winch for proper operation before each use. Do not use if damaged. Repair or replace immediately.
5. Make sure cable wind/loop is in the correct orientation. The cable should always enter and exit the spool on the spool side away from the mast (not facing the mast). See Figure 2-1.
6. When operating the winch, make sure the cable winds evenly on the drum. Do not allow the cable to bunch on one side of the drum or become crisscrossed or tangled.

If this happens, wind the affected cable off the drum and re-wrap correctly.

7. Avoid sideways cable slip. When winding the cable under load, make sure a minimum space of 2-times the cable diameter remains on the drum flange.
8. Always leave at least five wraps of the cable on the drum. Failure to do so may break the cable connection to drum and result in serious injury or property damage.
9. Be aware of and avoid pinch points, such as the folding legs, mast sections, winch, cable, and lifting forks. Keep hands away from all moving parts while operating lift.
10. Do not use more than one material lift to raise or lower a load.
11. When raising, lowering, or moving material lift, make sure there is adequate clearance to overhead wires and other objects and/or obstructions.
12. Do not operate lift outdoors in windy or gusty conditions, during storms, or if lightning is in the area.
13. Do not leave the material lift unattended with a load attached and elevated. After lifting or lowering a load, remove and secure the object. Do not rely on the winch or lift to hold an object for an extended period of time.
14. If welding near the material lift, do not contact any part of the lift by a live electrode. Do not use this lift as a ground for welding operations. Prevent weld splatter from contacting the lift.
15. When the lift is not in use, lower the mast to the lowest position.



Figure 2-1: Winch with Correct Cable Wind Orientation

3 Product Identification

3.1 COMPONENTS



3.2 ACCESSORIES



4 Specifications

4.1 PRODUCT SPECIFICATIONS

Model Number	JML-24X	JML-18X	JML-12X
Stock Number	JT1-2411	JT1-2410	JT1-2409
Lift Height, Maximum			
Forks Mounted Up on Carriage	24 ft., 7 in.	18 ft., 10 in.	13 ft., 1 in.
Forks Mounted Down on Carriage	22 ft., 10 in.	17 ft., 1 in.	11 ft., 4 in.
Max Lifting Capacity			
14" Load Center	650 lbs.	650 lbs.	650 lbs.
24" Load Center	430 lbs.	430 lbs.	430 lbs.
42" Load Center (fork extensions)	175 lbs.	175 lbs.	175 lbs.
Unit Height			
Lifting Mode, Masts Retracted	7 ft., 3 in.	7 ft., 3 in.	7 ft., 3 in.
Unit Length			
Legs Forward (standard mode)	5 ft., 7 in.	5 ft., 7 in.	5 ft., 7 in.
Legs Backwards (counterbalance mode)	8 ft., 8 in.	8 ft., 8 in.	8 ft., 8 in.
Unit Width			
Lifting Mode	6 ft., 5 in.	6 ft., 5 in.	2 ft., 2 in.
Ground Clearance			
Vertical Mode	2.7 in.	2.7 in.	2.7 in.
Horizontal Mode	6 in.	6 in.	6 in.
Lifting Forks			
Dimensions (W x L)	17 x 28.25 in.	17 x 28.25 in.	17 x 28.25 in.
Weight			
No Counterbalance Assembly	420 lbs.	376 lbs.	338 lbs.
With Counterbalance Assembly	670 lbs.	626 lbs.	588 lbs.
Counterbalance Assembly	250 lbs.	250 lbs.	250 lbs.
Winch			
Handle, Cranks per Foot	16 cranks/ft.	16 cranks/ft.	16 cranks/ft.
Drill Input, Gear Ratio	24-to-1	24-to-1	24-to-1
Drill Input, Max Speed (no load)	500 RPM	500 RPM	500 RPM
Drill Input, Socket Hex Size (6-point socket)	3/4 in.	3/4 in.	3/4 in.
Telescoping Masts	4-Section	3-Section	2-Section
Stabilizers	Yes	Yes	Yes
Forklift Pockets, Internal Dimensions	5.75 x 1.75 in.	5.75" x 1.75 in.	5.75" x 1.75 in.
Load Height, Minimum	9 in.	9 in.	9 in.

Table 4-1

4.2 PRODUCT DIMENSIONS - OPERATION MODES

Model Number	JML-24X	JML-18X	JML-12X
Dimensions, Standard Operation Mode			
Height (mast retracted)	7 ft., 3 in.	7 ft., 3 in.	7 ft., 3 in.
Length (legs forward)	5 ft., 7 in.	5 ft., 7 in.	5 ft., 7 in.
Width (stabilizers out)	6 ft., 5 in.	6 ft., 5 in.	6 ft., 5 in.
Dimensions, Counterbalance Operation Mode			
Height (mast retracted)	7 ft., 3 in.	7 ft., 3 in.	7 ft., 3 in.
Length (legs rear)	8 ft., 8 in.	8 ft., 8 in.	8 ft., 8 in.
Width (stabilizers out)	6 ft., 5 in.	6 ft., 5 in.	6 ft., 5 in.

Table 4-2

4.3 PRODUCT DIMENSIONS - STOWED MODES

Model Number	JML-24X	JML-18X	JML-12X
Dimensions, Horizontal Transport Mode			
Height	4 ft., 7 in.	4 ft., 4 in.	4 ft., 2 in.
Length	7 ft., 3 in.	7 ft., 3 in.	7 ft., 3 in.
Width	2 ft., 8 in.	2 ft., 8 in.	2 ft., 8 in.
Dimensions, Vertical Storage Mode			
Height	7 ft., 3 in.	7 ft., 3 in.	7 ft., 3 in.
Length	4 ft., 7 in.	4 ft., 7 in.	4 ft., 7 in.
Width	2 ft., 8 in.	2 ft., 8 in.	2 ft., 8 in.

Table 4-3

4.4 PRODUCT DIMENSIONS - COUNTERBALANCE ACCESSORY

Accessory	JML-CBX
Height	38.5 in.
Length	14 in.
Width	27 in.

Table 4-4

4.5 LOAD RATINGS AND PLACEMENT

⚠ WARNING

Do not exceed the rated load capacity of the material lift. Follow the load rating requirements as outlined in the information below. Failure to do so could result in the material lift tipping over or structural failure, causing the load and material lift to fall. Serious injury or death could occur.

⚠ WARNING

Safely place a load on the material lift forks.

- Make sure the load center of gravity is centered between the lifting fork arms.
- Place the load center of gravity as close to the carriage as possible.
- Place the load center of gravity within the maximum placement range as shown in Figure 4-1.
- Ensure the load is balanced and stable on the lifting forks.
- Secure the load to the lifting forks.

Failure to do so could result in the material lift tipping over, causing the load and material lift to fall. Serious injury or death could occur.

The load ratings for each material lift are on a moving scale determined by the load weight and the load placement on the fork. When the load center of gravity is farther away from the back of the forks, the load rating decreases. See *Section 4.5.1 Maximum Load Capacities at Positions*.

Make sure the load center of gravity (COG) is centered between the lifting fork arms. The maximum distance for the load COG from the front of the carriage is 24-inches. For distances greater than 24-inches, you must use the JET fork extensions accessory. The maximum load COG distance using the JET fork extensions is 42-inches. See Figure 4-1.

The chart in Table 4-5 shows maximum load capacities with the load center of gravity at various distances.

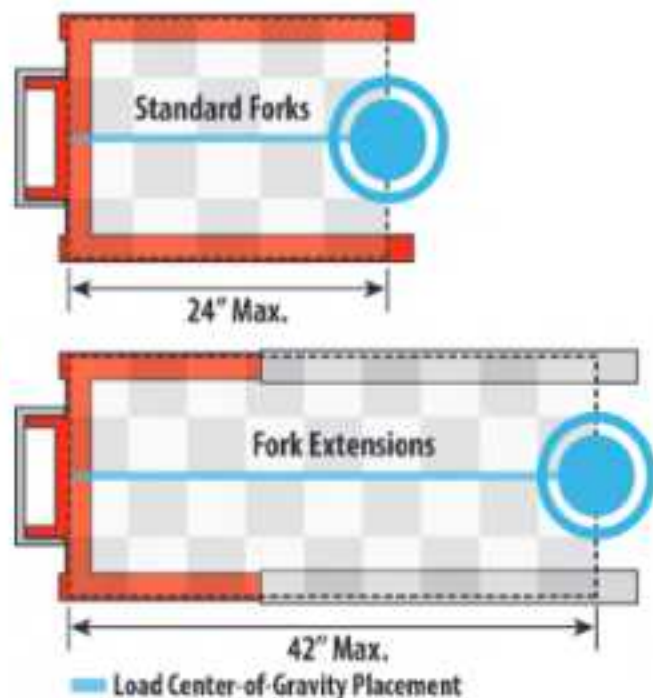


Figure 4-1: Center of Gravity Load Placement Zone

Before placing a load on the material lift forks, it's important to follow these rules:

- Determine the total weight of the load.
- Determine the center of gravity. The load center of gravity (COG) may not be the physical center of the load. You must center the load COG between the two forks and as close to the carriage as possible.

When placing a load on the material lift forks, it's important to follow these rules:

- Center the load center of gravity between the lifting fork arms as shown in Figure 4-1.
- Place the load center of gravity as close to the carriage as possible and within the load placement zone as shown in Figure 4-1.
- Keep the load center of gravity within the maximum placement range as shown in Figure 4-1.
- Ensure the load is balanced and stable on the lifting forks.
- Secure the load to the lifting forks.

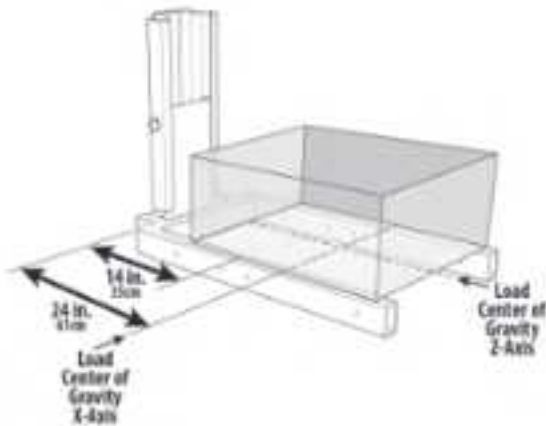


Figure 4-2: Center of Gravity Load Placement - Standard Forks

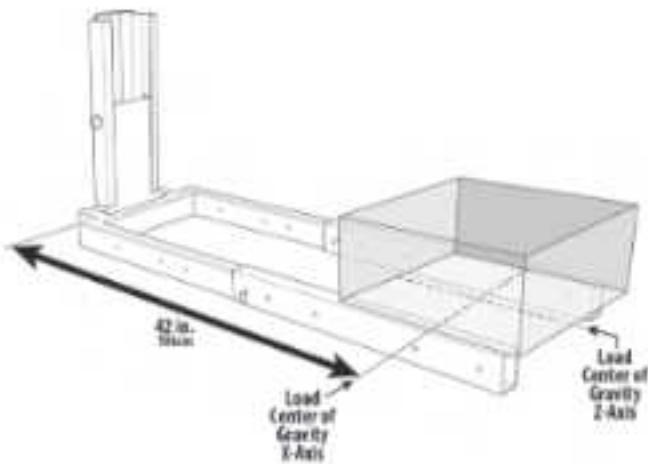


Figure 4-3: Center of Gravity Load Placement - Fork Extensions

4.5.1 Maximum Load Capacities at Positions

The chart below shows maximum load capacities with the load center of gravity at various distances. When the distance from the fork carriage to the load center increases, the maximum load rating decreases.

NOTE: Load center distances of 25" through 42" requires the use of fork extensions. Only use JET fork extensions. See Section 6.8 ACCESSORIES.

Maximum Load Ratings			
Model	Load Center		
	14 in. 35cm	24 in. 61cm	42 in. 106cm
JML-12X	650 lb.	430 lb.	175 lb.
JML-18X	650 lb.	430 lb.	175 lb.
JML-24X	650 lb.	430 lb.	175 lb.

Table 4-5

5 Unpacking & Assembly

⚠ WARNING

The material lift is very heavy. Unpack this machine on a stable and level surface. Use caution when removing lift from shipping pallet. Use a forklift to remove the lift from the pallet.

Your material lift is shipped complete. Check each item carefully. Report any damage immediately to your distributor and shipping agent. Do not discard any shipping material until the material lift is assembled and operating properly. Read this entire instruction manual thoroughly for safety information and assembly, operation, and maintenance instructions.

Follow the steps below to unpack from shipping pallet.

1. Cut away all protective plastic wrapping.
2. Cut the steel mounting straps that hold the lift to the shipping pallet. Carefully remove the lift from the pallet and set on a solid, level surface.

NOTE: The material lift has forklift pockets in the base tubing. This allows for lifting and moving the material lift using a forklift. There is also a lifting eye at the top that may be used with an overhead lifting system.

⚠ WARNING

CHECK FOR MISSING PARTS: If any parts are missing, do not place the machine into service until the missing parts are obtained and installed correctly.

5.1 SHIPPING CONTENTS

- 1 Material Lift
- 1 Lifting Fork
- 1 Owner's Manual
- 1 Product Registration Card
- 1 Mast Brake Release Tool

5.2 ATTACHING LIFTING FORK ASSEMBLY

The lifting fork assembly attaches to the fork carriage located on the front telescoping mast. The lifting fork has a vertical mounting frame that slides into the fork carriage. Follow the steps below to attach lifting fork assembly.

1. Attach winch handle or power drill to the winch (see *Section 6.3 WINCH OPERATION*). Raise the fork carriage to the upper portion of the front telescoping mast.
2. From the bottom, slide the fork vertical mounting frame up and into the fork carriage slot.
3. Raise or lower the lifting fork assembly to align the mounting holes on the vertical mounting frame with the mounting holes on each side of the fork carriage.
4. Insert the lifting fork mounting pin through the carriage and fork assembly vertical mounting frame. The mounting pin has a spring pin on the end to hold it in place.
5. To remove the lifting fork, reverse the steps above.

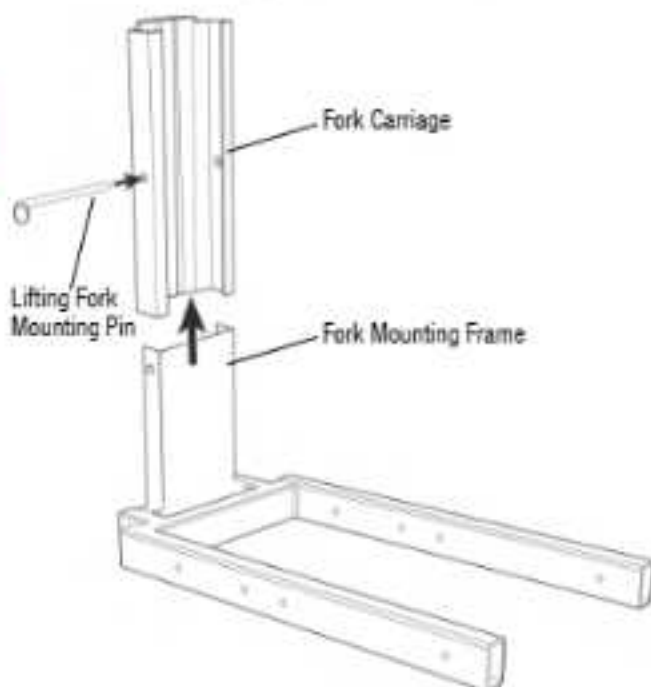


Figure 5-1: Attaching Lifting Fork Assembly

6 Lifting Operation

WARNING

Read and understand this entire owner's manual before operating this material lift. Failure to comply with instructions and safety warnings in this manual and on the lift may cause serious injury.

WARNING

This material lift is designed and intended for use by properly trained and experienced personnel only. Learn how to operate this lift properly and safely. If you are not familiar with the proper and safe operation of this lift, do not use it. Follow proper and safe lifting practices.

WARNING

Properly prepare the material lift before placing a load on the lifting forks.

- Extend and lock the stabilizers.
- Adjust height of stabilizer wheels to make full contact with the floor.
- Lock all locking casters.
- Ensure the leg latches are locked.

WARNING

Do not overload the lift. Follow the load ratings specified in *Section 4.5 LOAD RATINGS AND PLACEMENT*.

WARNING

Do not use this material lift to lift, lower, support, or transport people. Do not lift or support loads over the top of people. Never allow anyone under the lifting forks or an elevated load.

WARNING

Always operate this material lift while standing to the rear of the lift, behind the mast. Wear proper safety gear such as hard hat, safety glasses, steel-toe shoes, and gloves.

WARNING

Do not move the material lift to different locations while a load is attached. Have material at the lift location before adding load.

6.1 PRE-OPERATION INSPECTION

Before each use, inspect the material lift for defects, damage, modifications, and loose or missing parts. Follow the checklist below when inspecting the lift.

- Rust and/or corrosion
- Damage or cracks in weld joints
- Fastener, nuts, bolts, and screws
- Lifting forks
- Mounting and locking pins
- Masts
- Mast Breaking Feature
- Pulleys
- Cable and cable anchors
- Legs and stabilizers
- Leg latch locking clasp/hook assemblies
- Casters and caster locking assemblies
- Winch - Verify that winch clicks when raising the carriage. This indicates the ratchet pawls are properly engaging.
- With carriage fully lowered, make sure a minimum of four cable-wraps are around winch drum
- Base frame
- Accessories (if installed)

6.2 PREPARING MATERIAL LIFT

Before lifting any materials, the mast must be in the vertical, lifting position, the pivoting/rotating legs must be in their proper position and locked, the stabilizers must be rotated outward and locked into place, and all casters must make full contact with the ground.

6.2.1 Preparing Material Lift from Vertical Storage Mode

The pivoting/rotating legs are in the vertical position for shipping or storage. Before using the lift, the legs must be lowered into place and the stabilizers must be set.

1. Unhook and release the leg storage chains that surround the pivoting/rotating legs while in the vertical storage position (see Figure 6-1).
2. **For Standard Lift Mode (Legs Forward):** Carefully pivot (1A) and lower (1B) the legs to the forward position, until the caster wheels touch the floor. The leg tubing must be placed between the leg latch hooks (see Figure 6-2).

For Counterbalance Lift Mode (Legs Rear): Carefully lower the legs (2A) to the rear position, until the caster wheels touch the floor. The leg tubing must be placed between the leg latch hooks (see Figure 6-2).

Continued

⚠ WARNING

When operating in counterbalance lift mode, you must use **ONLY** the JET counterbalance weight assembly. Do not use any other object or method to apply weight to the material lift legs. Properly locate the JET counterbalance assembly according to the counterbalance labels and as instructed in *Section 6.5 COUNTERBALANCE LIFT MODE*. Not providing counterbalance weight using **ONLY** the JET counterbalance weight assembly will make the material lift unstable and will cause the lift and the load to topple over.



Figure 6-1: Remove Leg Storage Chains



Figure 6-2: Positioning Legs to Forward Position

- When each leg is fully lowered, press the silver hook arms down to position the silver hooks with the leg latch hooks. Lock legs in place by pressing down the red leg latch locking lever until it fully engages the latch hooks and the lever lays flat against the leg tube (see Figure 6-3).

NOTE: If the leg latches will not engage, the leg may not be aligning properly with the base frame due to an uneven floor. Adjust the stabilizer casters up or down take pressure off the latch mechanism and bring the legs in alignment with the base. The leg latch will engage when proper alignment is achieved.

- Unlock stabilizer legs by pulling up the spring locking pins. Rotate each stabilizer leg to the wide-stance stabilizing locking position. Spring locking pin will snap into place to lock stabilizing leg into this position (see Figure 6-4).
- Make sure all casters make full contact with the ground. The stabilizer casters have threaded stems with height adjusting handles (see Figure 6-4). Adjust stabilizer height to make full contact with the floor. See *Section 6.6.2 Stabilizer Locking Casters*.



Figure 6-3: Locking Legs In Place



Figure 6-4: Setting Stabilizer Legs

6.2.2 Preparing Material Lift from Horizontal Transport Mode

Raising Mast to Vertical, Lifting Position

WARNING

The material lift is heavy. Use proper lifting practices or multiple people to lift or lower the mast assembly to-or-from the horizontal transport mode.

1. Unlock stabilizer legs by pulling up the spring locking pins. Rotate each stabilizer leg to the wide-stance stabilizing locking position. Spring locking pin will snap into place to lock stabilizing leg into this position (see Figure 6-5).
2. Unhook and release the storage chains that surround the pivoting/rotating legs while in the horizontal transport mode (see Figure 6-6).
3. Engage the roll and swivel locks on rear casters and the roll locks on the stabilizer casters to stabilize lift movement. See *Section 6.6 CASTERS*.
4. Position yourself at the end of the mast assembly. Bending at the knees, reach down and grasp the upper T-handle. Lifting with your legs, raise the mast assembly up to the vertical position (see Figure 6-7). Make sure the mast position locking pin snaps into place when the mast is in the full upright position (see Figure 6-8).
5. Slightly lower the lifting fork carriage to relieve pressure. Remove the mast locking arm from the fork carriage by pulling the arm out from its mounting point (1) and rotating it to the rear of the mast (2) (see Figure 6-8).
6. The pivoting/rotating legs are in the counterbalance lift mode. For counterbalance lifting instructions, see *Section 6.5 COUNTERBALANCE LIFT MODE*.
7. Make sure all casters make full contact with the ground. The stabilizer casters have threaded stems with height adjusting handles (see Figure 6-6). Adjust stabilizer height to make full contact with the floor. See *Section 6.6.2 Stabilizer Locking Casters*.



Figure 6-6: Removing Storage Chains



Figure 6-7: Lifting Mast to Vertical Position



Figure 6-5: Setting Stabilizer Legs



Figure 6-8: Mast Lock Arm

Positioning Pivoting/ Rotating Legs for Standard Lift Mode

For standard lifting functions, you must move and lock the pivoting/rotating legs to the forward position. Follow the steps below to position the pivoting/rotating legs for standard lift mode. For standard lifting instructions, see *Section 6.4 STANDARD LIFT MODE*.

1. Unlock each leg by lifting the red leg latch locking lever and the silver hook arms to disengage from the leg latch hooks (see Figure 6-9).
2. Carefully lift each leg (1A) and pivot each leg 180-degrees (1B). Then lower each leg to the forward position (1C). The leg tubing must be placed between the leg latch hooks (see Figure 6-10).
3. When each leg is fully lowered, press the silver hook arms down to position the silver hooks with the leg latch hooks. Lock legs in place by pressing down the red leg latch locking lever until it fully engages the latch hooks and the lever lays flat against the leg tube (see Figure 6-11).

NOTE: If the leg latches will not engage, the leg may not be aligning properly with the base frame due to an uneven floor. Adjust the stabilizer casters up or down take pressure off the latch mechanism and bring the legs in alignment with the base. The leg latch will engage when proper alignment is achieved.

4. Make sure all casters make full contact with the ground. The stabilizer casters have threaded stems with height adjusting handles. Adjust stabilizer height to make full contact with the floor. See *Section 6.6.2 Stabilizer Locking Casters*.



Figure 6-10: Positioning Legs to Forward Position



Figure 6-9: Unlocking Legs



Figure 6-11: Locking Legs In Place

6.3 WINCH OPERATION

The winch can be operated with either the included winch handle or a cordless drill.

Cordless Drill:

Refer to Figure 6-12

Using a cordless drill to raise and lower the load helps improve lift safety and eliminates fatigue. If previously attached, remove the winch handle. Attach a cordless drill with a standard 3/4-inch, 6-point socket onto the winch drive spindle (see Figure 6-12). **NOTE:** Do not use a 12-point socket as this may cause wear to the socket connection nut.

Do not use an impact driver. Use a drill with a variable-speed trigger to “soft” start the load for better control. Do not exceed 500 RPM. For most drives, this corresponds with speed-setting 1. Verify the correct setting for the cordless drill you use.

When lifting or lowering a load, before releasing the trigger, confirm that the winch brake is holding the load in place.

IMPORTANT: When lowering a load, maintain a low descending speed to reduce heat buildup on the winch brake.

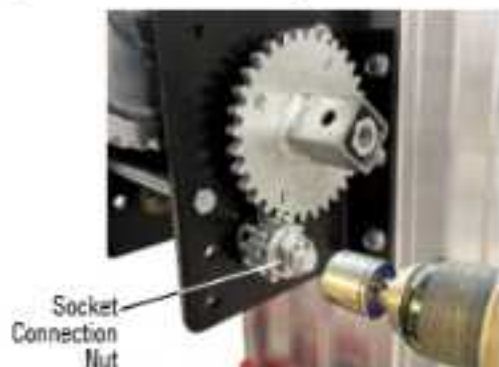


Figure 6-12: Cordless Drill Winch Operation

Winch Handle:

Refer to Figure 6-13

The winch handle is included with the material lift. To mount, pull up the handle's spring plunger, slide mounting fixture over the winch drive spindle. Align the spring plunger with the plunger mounting hole on the drive spindle and release the spring plunger. Make sure the plunger seats in the mounting hole. When not used, the handle can be stored on the lower T-handle, as shown in *Section 3 PRODUCT IDENTIFICATION*.



Figure 6-13: Attaching Winch Handle

6.4 STANDARD LIFT MODE

⚠ WARNING

Do not overload the lift. Make sure the load is balanced on the lifting forks. Follow the load ratings and load placement specifications found in *Section 4.5 LOAD RATINGS AND PLACEMENT*.

In standard lift mode, the pivoting/rotating legs are locked in the forward position and the stabilizer legs are locked in the wide-stance stabilizing position. Before attempting to use the lift in standard lift mode, be sure the lift is properly setup. See *Section 6.2 PREPARING MATERIAL LIFT* to properly and safely configure the lift for standard lift mode.

Follow the steps below to safely operate the material lift in normal lift mode.

1. Follow all load rating and load placement specifications found in *Section 4.5 LOAD RATINGS AND PLACEMENT*.
2. Move material lift to the location for lifting.
3. Make sure all casters make full contact with the ground. The stabilizer casters have threaded stems with height adjusting handles. Adjust stabilizer height to make full contact with the floor. See *Section 6.6.2 Stabilizer Locking Casters*.
4. Using winch, adjust the position of the lifting forks in preparation for loading. The winch can be operated with either the included winch handle or a cordless drill with a 3/4-inch, 6-point socket (not included). To operate winch, see *Section 6.3 WINCH OPERATION*.
5. Place the load onto the lifting forks and secure the load.
6. Adjust material lift position in preparation for lifting.
7. Lock all caster wheels to stabilize lift movement. See *Section 6.6 CASTERS*.
8. Lift the load to desired height using the winch.

6.5 COUNTERBALANCE LIFT MODE

NOTICE

The JET counterbalance weight assembly does not ship with the material lift. You must order and receive the JET counterbalance weight assembly before operating this lift in counterbalance lift mode. See *Section 6.8 ACCESSORIES*. Order part number JT1-2594.

WARNING

When operating in counterbalance lift mode, you must use **ONLY** the JET counterbalance weight assembly. Do not use any other object or method to apply weight to the material lift legs. Properly locate the JET counterbalance assembly according to the counterbalance labels and as instructed below. Not providing counterbalance weight using **ONLY** the JET counterbalance weight assembly will make the material lift unstable and will cause the lift and the load to topple over.

WARNING

Do not overload the lift. Make sure the load is balanced on the lifting forks. Follow the load ratings and load placement specifications found in *Section 4.5 LOAD RATINGS AND PLACEMENT*.

Using the counterbalance lift mode allows you to lift loads while being as close as possible to walls or other obstacles at the floor level.

In counterbalance lift mode, the pivoting/rotating legs are locked in the rear position with counterbalance weights applied and the stabilizer legs locked in a wide-stance stabilizing position. Before attempting to use the lift in counterbalance lift mode, be sure the lift is properly setup. See *Section 6.2 PREPARING MATERIAL LIFT* to properly and safely configure the lift for counterbalance lift mode.

Follow the steps below to safely operate the material lift in counterbalance lift mode.

1. Follow all load rating and load placement specifications found in *Section 4.5 LOAD RATINGS AND PLACEMENT*.
2. Move material lift to the location for lifting.

3. Make sure all casters make full contact with the ground. The stabilizer casters have threaded stems with height adjusting handles. Adjust stabilizer height to make full contact with the floor. See *Section 6.6.2 Stabilizer Locking Casters*.
4. Place the JET counterbalance weight assembly near the ends of the pivoting/rotating legs. You must place the counterbalance weight at the leg ends to provide the maximum counterbalance force. See Figure 6-14 for proper placement.
5. Using winch, adjust the position of the lifting forks in preparation for loading. The winch can be operated with either the included winch handle or a cordless drill with a 6-point, 3/4-inch drive socket (not included). To operate winch, see *Section 6.3 WINCH OPERATION*.
6. Place the load onto the lifting forks and secure the load.
7. Adjust material lift position in preparation for lifting.
8. Lock all caster wheels to stabilize lift movement. See *Section 6.6 CASTERS*.
9. Lift the load to desired height using the winch.



Figure 6-14: Material Lift in Counterbalance Lift Mode

6.6 CASTERS

6.6.1 Rear Locking Casters

The rear locking casters have two locking features. One locks the caster roll and the other locks the caster swivel.

Locking / Unlocking Caster Roll

The caster roll locking lever is located on the side of each caster (see Figure 6-15).

1. To lock the caster roll, press the ON side of the locking lever.
2. To unlock the caster roll, press the OFF side of the locking lever.

Locking / Unlocking Caster Swivel

The caster swivel locking lever is located above each caster (see Figure 6-15).

1. To lock the caster swivel, press the locking lever down.
2. To unlock the caster swivel, pull the locking lever up.



Figure 6-15: Rear Locking Caster

6.6.2 Stabilizer Locking Casters

The stabilizer casters are locking and have height adjustment. Adjusting the caster height is essential and ensures all casters make contact with the ground. This provides the greatest stability for the material lift.

Locking / Unlocking Stabilizer Caster Roll

The caster roll locking lever is located on the side of each caster and operate the same as the rear locking casters. See Section 6.6.1 *Rear Locking Casters* for instructions.

Adjusting Height of Stabilizer Casters

Turn the caster adjusting handle to either raise or lower the caster height. See Figure 6-16.



Figure 6-16: Adjusting Height of Stabilizer Casters

6.7 MAST SAFETY BRAKE SYSTEM

This material lift is equipped with a mast brake system. This safety feature activates if the mast sections drops too quickly.

If the mast brake activates, follow the information below.

Inspect the Lift Cable

Inspect the lift cable for any malfunction or break. If the lift cable is damaged or broken, remove the lift from service and replace the cable immediately.

Mast Brake Release Method 1

If the lift cable is not damaged or broken, follow the steps below.

1. Using the winch, raise the carriage at least 6-inches. This should release the mast brake and allow the carriage to move freely using the winch.
2. If this method does not release the mast brake, follow the instructions in Method 2.

⚠ WARNING

Before using the mast brake release hook on the mast in the vertical position, you must support the bottom of the affected mast(s) to prevent free falling when the mast brake is released. Make sure there is tension on the cable and position a sturdy support block beneath the mast(s).

Mast Brake Release Method 2

Each mast segment, including the fork carriage, has a brake system. You can release the mast brake using the mast brake release hook (Figure 6-17), supplied with the lift.

1. Support the bottom of the affected mast(s) by making sure there is tension on the cable and positioning a sturdy support block beneath the mast(s).
2. Look up from the bottom and inside of the affected mast. On the right side of the interior extrusion, locate the mast brake access port. See Figure 6-18.
3. Move the mast brake release hook up from the bottom of the mast. Insert the hook into the mast brake access port. Position the hook above the mast brake roller and firmly pull down to release the brake.



Figure 6-17: Mast Brake Release Hook



Figure 6-18: Mast Brake Roller Location

6.8 ACCESSORIES

The use of these optional accessories expands the use of your JET material lift. To order accessories, contact JET Customer Service at 800-274-6848.

JML-FEX - Fork Extensions

Stock# JT1-2595

The JET fork extensions accessory increases the total length of the lifting forks. See Section 4.5 LOAD RATINGS AND PLACEMENT for proper load placement requirements.

**JML-APC - Adjustable Pipe Cradle**

Stock# JT1-2596

The JET adjustable pipe cradle accessory provides added security when lifting pipes or other rounded items.

**JML-CBX - Counterbalance Weight Assembly**

Stock# JT1-2594

The JET counterbalance weight assembly is essential when lifting in the counterbalance lift mode. Place the counterbalance weight assembly on the ends of the pivoting/rotating legs to keep the material lift from tipping over during counterbalance lifting operations.



7 Storage & Transport

7.1 PLACING LIFT IN VERTICAL STORAGE MODE

⚠ WARNING

Engage mast locking arm before transporting material lift. Failure to do so may cause the mast sections to extend, causing serious injury and damage to the lift or surrounding property.

7.1.1 Preparing Material Lift from Standard Lift Mode or Counterbalance Lift Mode

1. Lower lift forks to the lowest position.
2. Unlock stabilizer legs by pulling up the spring locking pins. Rotate each stabilizer leg from the wide-stance stabilizing position to the front position (parallel to the lifting forks). Spring locking pin will snap into place to lock stabilizing leg in this position (see Figure 7-1).
3. Unlock each leg by lifting the red leg latch locking lever and the silver hook arms to disengage from the leg latch hooks (see Figure 7-2).
4. **From Standard Lift Mode (Legs Forward):** Carefully lift each leg to the vertical position (1A) and pivot each leg 180-degrees (1B) (see Figure 7-3).
From Counterbalance Lift Mode (Legs Rear): Carefully lift each leg to the vertical position (2A) (see Figure 7-3).
5. With each leg in the vertical position, wrap the leg storage chains around the legs and attach to the lower T-handle, as shown in Figure 7-4.



Figure 7-1: Storing Stabilizer Legs

6. Engage the mast locking arm. To do so, pull arm outward from its position at the rear of the mast. Rotate the arm forward and release when the rubber wheel is over the fork carriage. Use the winch to raise the fork carriage just enough to make contact with the rubber wheel. See Figures 7-5 and 7-6.



Figure 7-2: Unlocking Legs



Figure 7-3: Positioning Legs to Vertical Position



Figure 7-4: Attaching Leg Storage Chains



Figure 7-5: Engaging Mast Locking Arm



Figure 7-7: Material Lift in Vertical Storage Mode



Figure 7-6: Fork Carriage Contact with Rubber Wheel

7.2 PLACING LIFT IN HORIZONTAL TRANSPORT MODE

WARNING

The material lift is heavy. Use proper lifting practices and multiple people to lift or lower the mast assembly to-or-from the horizontal transport mode.

WARNING

Engage mast locking arm before transporting material lift. Failure to do so may cause the mast sections to extend, causing serious injury and damage to the lift or surrounding property.

NOTICE

If transporting in a truck or trailer, remove lifting fork from the material lift and store safely.

7.2.1 Preparing Material Lift from Standard Lift Mode or Counterbalance Lift Mode

1. Lower lift forks to the lowest position.
2. If the lift is in counterbalance lift mode, the pivoting/rotating legs are in the correct position. Proceed to step 4.

If the lift is in standard lift mode, you must place the pivoting/rotating legs in the counterbalance lift mode (legs rear) position.

From Standard Lift Mode (Legs Forward): Unlock each leg by lifting the red leg latch locking lever and the silver hook arms to disengage from the leg latch hooks (see Figure 7-8).

Carefully lift each leg to the vertical position (1) and pivot each leg 180-degrees (2). Carefully lower the legs to the rear position (3), until the caster wheels touch the floor. The leg tubing must be placed between the leg latch hooks (see Figure 7-9).

3. When each leg is fully lowered, press the silver hook arms down to position the silver hooks with the leg latch hooks. Lock legs in place by pressing down the red leg latch locking lever until it fully engages the latch hooks and the lever lays flat against the leg tube (see Figure 7-10).

NOTE: If the leg latches will not engage, the leg may not be aligning properly with the base frame due to an uneven floor. Adjust the stabilizer casters up or down take pressure off the latch mechanism and bring the legs in alignment with the base. The leg latch will engage when proper alignment is achieved.

4. Engage the mast locking arm. To do so, pull arm outward from its position at the rear of the mast. Rotate the arm forward and release when the rubber wheel is over the fork carriage. Use the winch to raise the fork carriage just enough to make contact with the rubber wheel. See Figures 7-11 and 7-12.
5. Position yourself behind the mast and between the pivoting/rotating legs.
6. Grasp the lower T-handle with one hand and with the other hand, pull the spring-loaded mast position locking pin outward (see Figure 7-13). Pull back on the lower T-handle to start the mast assembly pivoting backwards.
7. Before the mast assembly pivots too far, reach up and grasp the upper T-handle with your free hand, then move your other hand to the upper T-handle. While firmly holding the upper T-handle with both hands, carefully lower the mast assembly until the lower T-handle rests on top of the pivoting/rotating legs (see Figure 7-14).

WARNING

Do not drop the weight of the mast assembly onto the legs. Gently rest the lower T-handle onto the legs. Personal injury and damage to the T-handle and the material lift could occur.

8. Wrap the leg storage chains around each leg and attach to the lower T-handle, as shown in Figure 7-15.
9. Unlock stabilizer legs by pulling up the spring locking pins. Rotate each stabilizer leg from the wide-stance stabilizing position to the rear position (behind to the mast assembly). Spring locking pin will snap into place to lock stabilizing leg in this position.



Figure 7-8: Unlocking Legs



Figure 7-10: Locking Legs In Place



Figure 7-9: Positioning Legs to Rear Position



Figure 7-11: Engaging Mast Locking Arm



Figure 7-12: Fork Carriage Contact with Rubber Wheel



Figure 7-13: Mast Position Locking Pin



Figure 7-15: Connecting Storage Chains



Figure 7-14: Lowering Mast Assembly



Figure 7-16: Material Lift in Horizontal Transport Mode

7.3 LIFTING AND MOVING MATERIAL LIFT WITH FORKLIFT

⚠ WARNING

Do not use a forklift to raise an operating material lift to gain additional load height.

Only use a forklift to move this material lift after it has been converted to either vertical storage mode or horizontal transport mode. See *Section 7.1 PLACING LIFT IN VERTICAL STORAGE MODE* and *Section 7.2 PLACING LIFT IN HORIZONTAL TRANSPORT MODE*.

Engage mast locking arm before transporting material lift. Failure to do so may cause the mast sections to extend, causing serious injury and damage to the lift or surrounding property.

⚠ WARNING

Use proper and appropriately-rated forklift and when lifting and move the material lift.

The material lift has forklift pockets in the base tubing. This allows for moving the material lift using a forklift.

IMPORTANT: Only use a forklift to move this material lift after it has been converted to either vertical storage mode or horizontal transport mode.

1. Lower the mast to the lowest position.
2. Widen or narrow the forklift forks to match the forklift pockets in the base tubing.
3. Carefully insert the forklift forks into the pockets. Make sure the forklift forks fully support the entire base pockets.
4. Lift and carry the material lift to the desired location.



Figure 7-17: Base Forklift Pockets

7.4 LOADING MATERIAL LIFT INTO TRUCK OR TRAILER

⚠ WARNING

The material lift is heavy. Use proper lifting practices and multiple people when lifting and positioning into a truck or trailer.

NOTICE

If transporting in a truck or trailer, remove lifting fork from the material lift and store safely.

The material lift can be transported with a truck or trailer. Follow the information below to safely transport the material lift.

Before loading the material lift into a truck or trailer, you must convert the lift to the horizontal transport mode. See *Section 7.2 PLACING LIFT IN HORIZONTAL TRANSPORT MODE*. You must also remove the lifting forks from the fork carriage. See *Section 5.2 ATTACHING LIFTING FORK ASSEMBLY*.

7.4.1 Loading Material Lift with Forklift

1. Follow the information in *Section 7.3 LIFTING AND MOVING MATERIAL LIFT WITH FORKLIFT*.
2. Carefully position the material lift in truck or trailer.
3. Lock all locking casters and securely strap down the material lift to keep it firmly in place. Make sure the lift will not roll or shift while in transit.
4. Store the lifting fork assembly separate from the material lift. Make sure it is strapped down and secured.

7.4.2 Loading Material Lift Manually

1. Position the material lift behind the truck or trailer with the mast end facing the truck or trailer.
2. Using at least two people and proper lifting techniques, grasp the upper T-handle. Lift and move the end of the material lift over the end of the truck or trailer bed. Lower the leg casters to rest on the truck or trailer bed.
3. Move to the base end of the material lift and raise the lift, pivoting the lift weight on the leg casters. Push and position the material lift onto the truck or trailer bed. Make sure all casters are securely positioned on the truck or trailer bed.
4. Lock all locking casters and securely strap down the material lift to keep it firmly in place. Make sure the lift will not roll or shift while in transit.
5. Store the lifting fork assembly separate from the material lift. Make sure it is strapped down and secured.

8 Maintenance

⚠ WARNING

Maintenance should be performed on a regular basis by qualified personnel. Always follow proper safety precautions when working on or around any machinery.

NOTICE

Proper maintenance can increase the life expectancy of your machine.

8.1 GENERAL MAINTENANCE

Follow the schedules below to ensure the material lift operates safely and properly and provides maximum life to parts and assemblies.

8.1.1 Before Each Use

1. Inspect cable for damage including kinks, cable strands untwisting (see Figure 8-1), and broken wire strands. Replace the cable if the cable is kinked, untwisting, or more than three wire strands are broken. Do not use the lift until the cable is replaced. To replace the cable, refer to *Section 10.2.4 Cable Replacement*.

IMPORTANT: For all cable use and maintenance, follow the guidelines under OSHA Standard 1926.1413.

2. Make sure pivoting/rotating legs and stabilizing legs are not damaged and properly locked into place.
3. Check for bent, broken, or missing components. Do not use until damaged or missing components have been replaced.
4. Extend the mast sections and ensure smooth operation.

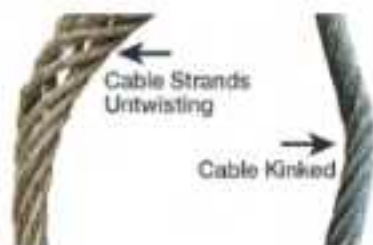


Figure 8-1: Cable Strands Untwisting and Cable Kinked

8.1.2 Winch Maintenance

To ensure maximum winch performance, inspect periodically. Check monthly and more frequently if winch is exposed to wet or dirty environments.

1. Clean the winch after each use. Remove any dirt on the winch surface.
2. Annually, or more often if needed, grease gears, reel shaft, and handle threads. Use a thick marine-grade CS grease, such as Peerless OG2 or Mobile Centaur XHP 460, or equivalent.
3. Occasionally apply a light mineral oil on the drive shaft bearings.
4. If winch is used in freezing, icy conditions, apply silicone spray to the ratchet pawl and pawl spacers and washer. Do not spray other brake mechanism parts.
5. Do not oil or grease the brake mechanism.

8.1.3 Every Six Months

1. Inspect all bolts and nut to make sure they are tight.
2. Inspect the base and legs assembly. Make sure the base and legs are free from damage that could affect the operation, strength, and integrity of the lift.
3. Make sure cable is properly seated and aligned in all pulleys.
4. Inspect pulley enclosures for damage that can affect the pulley operation. Make sure pulleys can rotate freely. If pulley enclosures are damaged and contact the pulleys or cables, replace the affected mast section.

8.1.4 Annually

1. Using the provided zerk fittings, grease the caster wheels. Use a thick marine-grade CS grease, such as Peerless OG2 or Mobile Centaur XHP 460, or equivalent.
2. Grease winch gears. Use a thick marine-grade CS grease, such as Peerless OG2 or Mobile Centaur XHP 460, or equivalent. **IMPORTANT:** If you are consistently operating the lift at or near maximum capacities, apply grease to winch gears more often. Keeping the winch gear properly greased will prolong the life of the winch.

9 Troubleshooting

For additional help with troubleshooting, call our customer support department at 800-274-6848.

PROBLEM	CAUSE	SOLUTION
Mast section do not raise/lower in sequence.	<p>Load exceeds maximum load capacity.</p> <p>Load is not properly centered.</p> <p>Mast roller not rotating.</p> <p>Cable pulley not rotating.</p> <p>Cable is damaged.</p> <p>Mast roller wheels are not rotating.</p> <p>Damaged mast section.</p>	<p>Remove excess weight from load. See <i>Section 4.5 LOAD RATINGS AND PLACEMENT</i>.</p> <p>Center the load center of gravity between the lifting forks. See <i>Section 4.5 LOAD RATINGS AND PLACEMENT</i>.</p> <p>Inspect for dirt, grease, or foreign objects. Clean mast sections with degreaser or brake cleaner.</p> <p>Inspect for damage. Replace pulley if damaged.</p> <p>If cable is kinked, untwisted, or has broken strands, replace.</p> <p>Inspect wheels for damage. If damaged, replace. If undamaged, clean wheels. If wheels still don't rotate, replace.</p> <p>Replace damaged mast section.</p>
Mast sections will not release or travel down.	Mast safety brake is activated.	Reset Mast Safety Brake. See <i>Section 6.7 MAST SAFETY BRAKE SYSTEM</i> .
Mast safety brake will not release.	Mast section or carriage is too close to mast stop and don't have enough clearance for brakes to release.	Use mast brake release hook to reset Mast Safety Brake. See <i>Section 6.7 MAST SAFETY BRAKE SYSTEM</i> .
Load travels down slowly when handle is released.	Winch ratchet pawls are not engaged.	Raise the load until the ratchet clicks, then release the handle to engage the ratchet. If this doesn't work, ratchet may be installed wrong.
After servicing winch, the winch brake does not work.	Brake ratchet and/or ratchet pawl not installed correctly.	Install brake ratchet and/or ratchet pawl correctly.
Leg latch will not latch.	Material lift base and stabilizers are not level with all wheels touching the ground.	Adjust the stabilizer locking casters up or down until all material lift legs are touching the ground. See <i>Section 6.6.2 Stabilizer Locking Casters</i> .

PROBLEM	CAUSE	SOLUTION
Winch makes squealing noise under load.	Drive shaft bearings need lubrication.	Apply a light mineral oil to the drive shaft bearing.
Mast/load chatters or binds and descends erratically.	Lack of winch gear lubrication.	Apply grease to winch gears. See <i>Section 8.1.2 Winch Maintenance</i> . If problem persists, replace winch.
Winch operates but forks don't move.	Cable damaged, broken, or disconnected.	Inspect cable for damage, breakage, or disconnected. Reconnect or replace cable.

9.1 SERVICE MANUAL

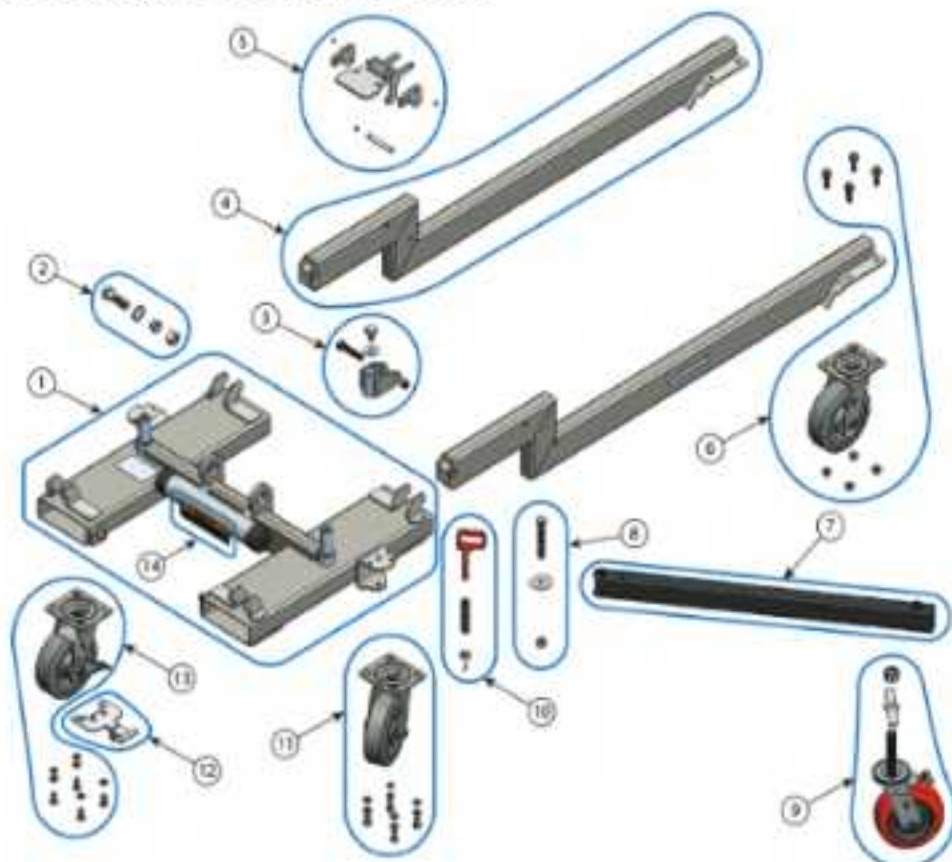
A service manual for this material lift is available for download from our website. Scan the QR code below to navigate to the material lift home page. There, you will find a link for downloading the service manual.



10 Replacement Parts

Replacement parts are listed on the following pages. To order parts or reach our service department, call 1-800-274-6848 Monday through Friday, 8:00 a.m. to 5:00 p.m. CST. Having the Model Number and Serial Number of your machine available when you call will allow us to serve you quickly and accurately.

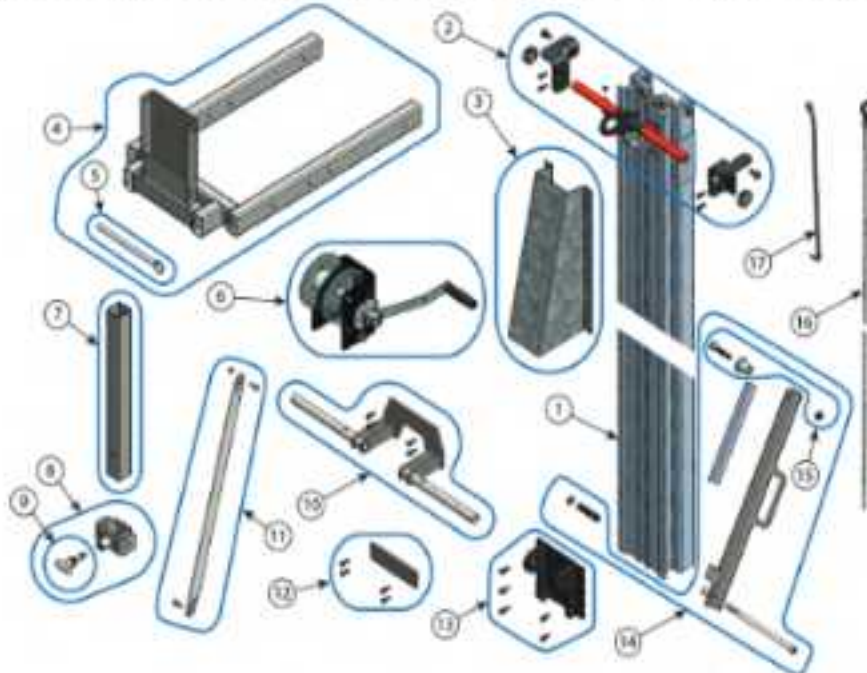
10.1.1 BASE & LEGS - EXPLODED VIEW



10.1.2 BASE & LEGS - PARTS LIST

Item	Part No.	Description	Qty.
1	JT1-2766	Base Weldment Assembly (includes manual tube warning label)	1
2	JT1-2465	Mast Mounting Hardware Set	2
3	JT1-2765	Front Leg Pivot Assembly	2
4	JT1-2764	Leg / Warning Label Set	2
5	JT1-2761	Leg Latch Assembly	2
6	JT1-2759	Leg Caster & Hardware Set	2
7	JT1-2485	Stabilizer	2
8	JT1-2799	Stabilizer Hardware Set	2
9	JT1-2760	Stem Locking Caster & Hardware Set	2
10	JT1-2762	Stabilizer Latch Handle Assembly	2
11	JT1-2811	Base Caster & Hardware Set	2
12	JT1-2435	Caster Lock	2
13	JT1-2763	Base Locking Caster Set	2
14	JT1-2623	Manual Tube Warning Label	1

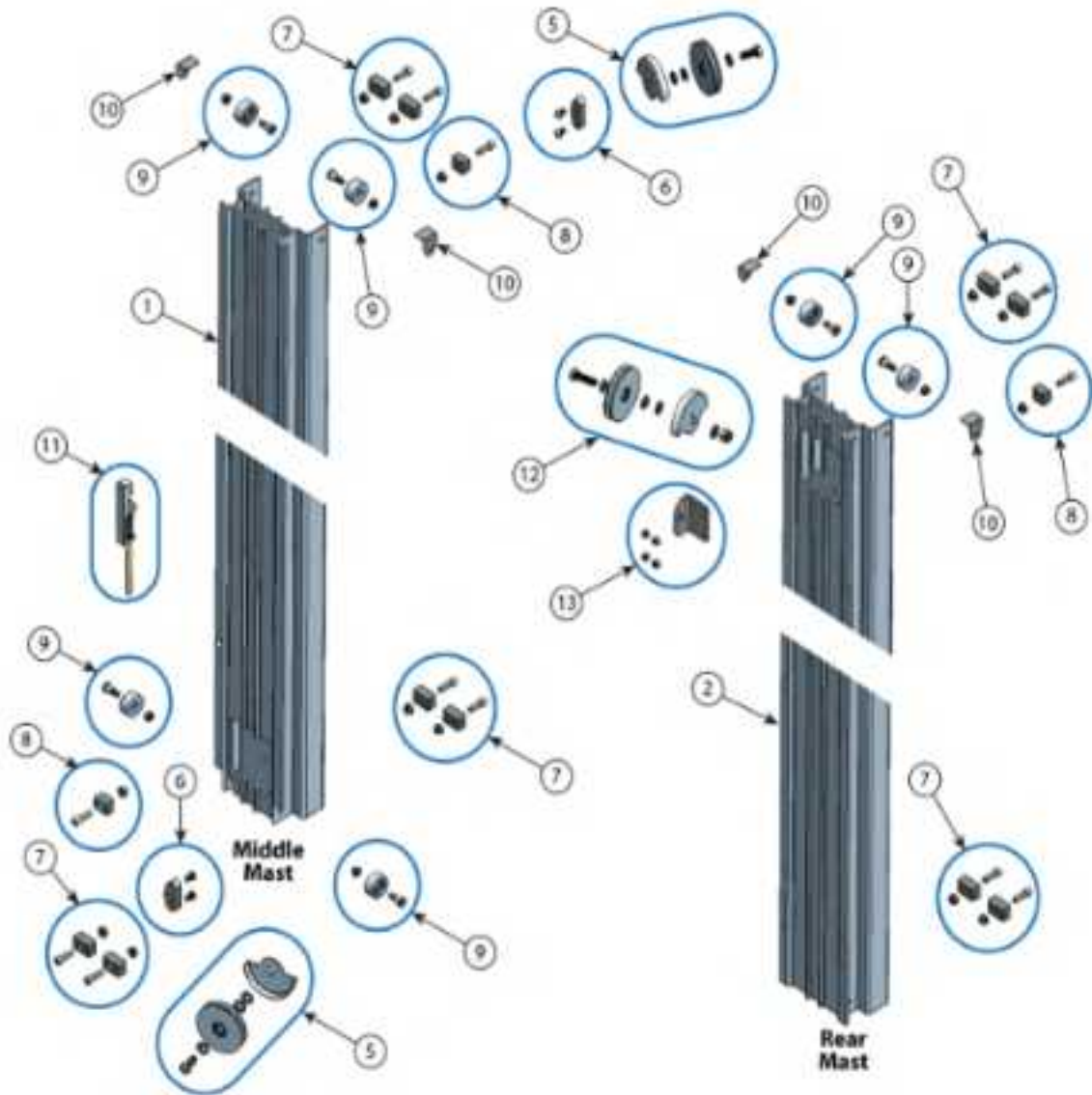
10.2.1 EXTRUSION, WINCH, HANDLES & SUPPORTS - EXPLODED VIEW

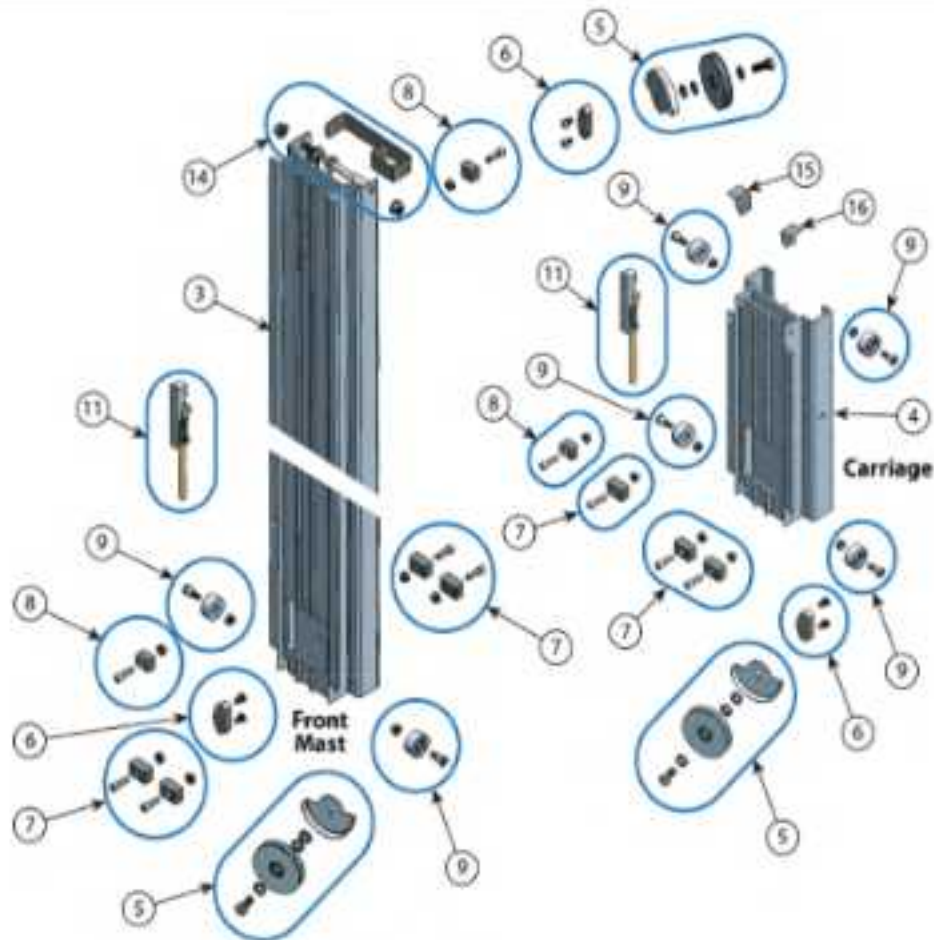


10.2.2 EXTRUSION, WINCH, HANDLES & SUPPORTS - PARTS LIST

Item	Part No.	Description	Qty.
1	JT1-2461	Rear Mast Extrusion	1
2	JT1-2767	Handle Assembly	1
3	JT1-2778	Pulley Shroud with Warning Labels	1
4	JT1-2770	Lifting Fork Assembly with Pin and Warning Label	1
5	JT1-2547	Lifting Fork Pin	1
6	JT1-2505	Winch Assembly	1
	JT1-2774	Winch Input Shaft Assembly (not shown, part of item #6)	1
	JT1-2775	Winch Rope Clamp (not shown, part of item #6)	1
	JT1-2776	Winch Handle (not shown, part of item #6)	1
	JT1-2777	Reel/Hub Spring Kit (not shown, part of item #6)	1
7	JT1-2818	Slide Tube & Hardware	1
8	JT1-2771	Mast Slide Assembly (includes Mast Slide Plunger)	1
9	JT1-2632	Mast Slide Plunger	1
10	JT1-2768	Support Tube	2
11	JT1-2773	Split Handle/Upper Slide Plate	1
12	JT1-2772	Lower Slide Tube Plate & Hardware	1
13	JT1-2819	Mast Pivot Bracket & Hardware	1
14	JT1-2769	Mast Hold Down Bar Assembly (JML-24X)	1
	JT1-2812	Mast Hold Down Bar Assembly (JML-18X)	1
	JT1-2813	Mast Hold Down Bar Assembly (JML-12X)	1
15	JT1-2820	Mast Hold Down Roller Kit	1
16	JT1-2740	Cable for JML-24X	1
	JT1-2741	Cable for JML-18X	1
	JT1-2742	Cable for JML-12X	1
17	JT1-2816	Mast Brake Release Hook & Hardware	1

10.3.1 MASTS - EXPLODED VIEW





10.3.2 MASTS - PARTS LIST

Item	Part No.	Description	Qty.
1	JT1-2463	Middle Mast Extrusion (JML-24X)	2
	JT1-2463	Middle Mast Extrusion (JML-18X)	1
2	JT1-2461	Rear Mast Extrusion (JML-24X, JML-18X, JML-12X)	1
3	JT1-2464	Front Mast Extrusion (JML-24X, JML-18X, JML-12X)	1
4	JT1-2500	Carriage Extrusion (JML-24X, JML-18X, JML-12X)	1
5	JT1-2782	Main Pulley Assembly Kit (one per kit, qty. varies by model)	
6	JT1-2783	Pulley Mount Kit (one per kit, qty. varies by model)	
7	JT1-2781	Slide Block Kit (qty. of 3, qty. varies by model)	
8	JT1-2780	Center Slide Block Kit (one per kit, qty. varies by model)	
9	JT1-2779	Roller Kit (one per kit, qty. varies by model)	
10	JT1-2499	Roller Shield	2
11	JT1-2490	Mast Brake Assembly (qty. varies by model)	
12	JT1-2785	Rear Mast Pulley Kit	1
13	JT1-2786	Rear Pulley Mount Kit	1
14	JT1-2784	Rope Latch Kit	1
15	JT1-2738	LH Roller Shield	1
16	JT1-2739	RH Roller Shield	1

10.4 DECAL SET KIT - JT1-2810



⚠ DANGER

ELECTROCUTION HAZARD

Caution with overhead power lines can cause death or serious injury. This machine may become electrocuted if it touches power lines.

STAY CLEAR OF POWER LINES

⚠ WARNING

FAILURE TO PROPERLY SECURE POINTS CAN CAUSE LOAD DROP, INJURY, OR EQUIPMENT DAMAGE.

- Insure that lashing, pin, hitch, and tie-down are used.
- Check pin connections and tie-downs.
- Secure the entire pin assembly.

⚠ WARNING

NO RIDERS

⚠ WARNING

DO NOT STAND UNDER LOAD

⚠ WARNING

- Read and understand the operating manual before using lift.
- When using approved basket loads, only use JIF approved counterweight.
- Ensure the leg is fully seated, the latch is engaged, and the door is closed for maximum tie leg functionality.
- Ensure the anti-slip gear is operated by the lifting pin drive and the leg is fully retracted/extended during.
- Insure cables before use do not operate if the cable is frayed, worn, or damaged.
- There are other safety rules on attached load.
- Use only an authorized lift team.
- Never drive the lift unattended with an attached load.
- Do not climb on the lift or put a load head on the mast.
- Stop flow of overhead wires and obstructions.
- Do not operate during storms.
- Do not operate in gusty winds.
- See instructions before lifting and do not exceed rated load capacity.
 - Do not modify a mast or lift.
 - Always follow safe lifting practices.
 - Do not lift an unlevel load.

LOAD CENTER		
14 in	24 in	42 in
650 lb	450 lb	175 lb

⚠ WARNING

WINCH ACCESSORY CAN CAUSE SERIOUS INJURY OR DEATH. Follow these rules:

- Keep hands, feet, and clothing clear of pinch points.
- Do not lift people or loads too fast.
- Always maintain a hand on the hoist while using the load. Use handbrake if hoist is raised.
- Never release the handle until the work is fully done.
- Friction is not sufficient to stop the hoist if the hoist is not.
- Do not use an impact hoist or impact wrench.

DRILL DRIVE INPUT
3/4" SOCKET, 6-POINT

⚠ WARNING

READ ENCLOSED OPERATING INSTRUCTIONS BEFORE OPERATING LIFT

PULL HERE

Safety, Transport and Machine Storage

Before Transport: Secure the mast by locking the counterbalance.

⚠ WARNING

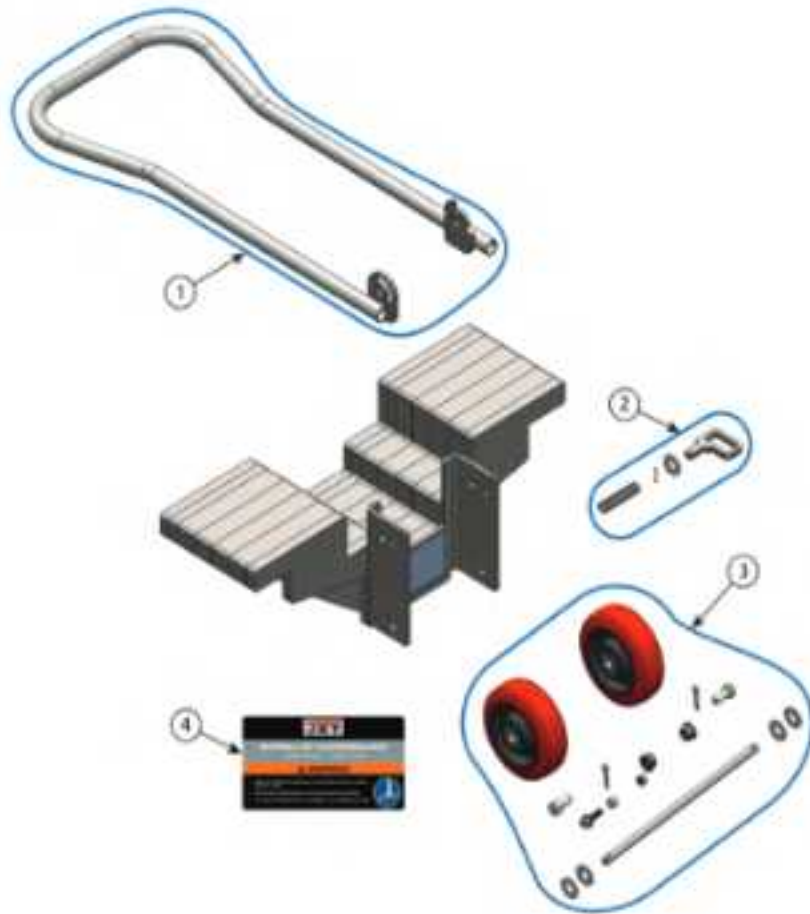
COUNTERBALANCE

↓ ↓

STOP CRANKING WHEN ARROWS LINE UP

⚠ WARNING

10.5.1 ACCESSORIES - EXPLODED VIEW



10.5.2 ACCESSORIES - PARTS LIST

Item	Part No.	Description	Qty.
1	JT1-2822	Counterbalance Handle Kit	1
2	JT1-2821	Counterbalance Spring/Pivot Kit	1
3	JT1-2823	Counterbalance Wheels & Hardware Kit	1
4	JT1-2737	Counterbalance Warning Label	1
5	JT1-2673	Pin for Extension Forks and Pipe Cradles (not shown)	1

11 Warranty

JET warrants every product it sells against manufacturers' defects. If one of our tools needs service or repair, please contact Technical Service by calling 1-800-274-6846, 8AM to 5PM CST, Monday through Friday.

Warranty Period

The general warranty lasts for the time period specified in the literature included with your product or on the official JET branded website.

- JET products carry a limited warranty which varies in duration based upon the product. (See *Product Listing with Warranty Period*, below)
- Accessories carry a limited warranty of one year from the date of receipt.
- Consumable items are defined as expendable parts or accessories expected to become inoperable within a reasonable amount of use and are covered by a 90-day limited warranty against manufacturer's defects.

Who is Covered

This warranty covers only the initial purchaser of the product from the date of delivery.

What is Covered

This warranty covers any defects in workmanship or materials subject to the limitations stated below. This warranty does not cover failures due directly or indirectly to misuse, abuse, negligence or accidents, normal wear-and-tear, improper repair, alterations, or lack of maintenance. JET woodworking machinery is designed to be used with Wood. Use of these machines in the processing of metal, plastics, or other materials may void the warranty. The exceptions are acrylics and other natural items that are made specifically for wood turning.

Warranty Limitations

Woodworking products with a Five-Year Warranty that are used for commercial or industrial purposes default to a Two-Year Warranty. Please contact Technical Service at 1-800-274-6846 for further clarification.

How to Get Technical Support

Please contact Technical Service by calling 1-800-274-6846. Please note that you will be asked to provide proof of initial purchase when calling. If a product requires further inspection, the Technical Service representative will explain and assist with any additional action needed. JET has Authorized Service Centers located throughout the United States. For the name of an Authorized Service Center in your area call 1-800-274-6846 or use the Service Center Locator on the JET website.

More Information

JET is constantly adding new products. For complete, up-to-date product information, check with your local distributor or visit the JET website.

How State Law Applies

This warranty gives you specific legal rights, subject to applicable state law.

Limitations on This Warranty

JET LIMITS ALL IMPLIED WARRANTIES TO THE PERIOD OF THE LIMITED WARRANTY FOR EACH PRODUCT. EXCEPT AS STATED HEREIN, ANY IMPLIED WARRANTIES OF MERCHANTABILITY AND FITNESS FOR A PARTICULAR PURPOSE ARE EXCLUDED. SOME STATES DO NOT ALLOW LIMITATIONS ON HOW LONG AN IMPLIED WARRANTY LASTS, SO THE ABOVE LIMITATION MAY NOT APPLY TO YOU.

JET SHALL IN NO EVENT BE LIABLE FOR DEATH, INJURIES TO PERSONS OR PROPERTY, OR FOR INCIDENTAL, CONTINGENT, SPECIAL, OR CONSEQUENTIAL DAMAGES ARISING FROM THE USE OF OUR PRODUCTS. SOME STATES DO NOT ALLOW THE EXCLUSION OR LIMITATION OF INCIDENTAL OR CONSEQUENTIAL DAMAGES, SO THE ABOVE LIMITATION OR EXCLUSION MAY NOT APPLY TO YOU.

JET sells through distributors only. The specifications listed in JET printed materials and on official JET website are given as general information and are not binding. JET reserves the right to effect at any time, without prior notice, those alterations to parts, fittings, and accessory equipment which they may deem necessary for any reason whatsoever. JET® branded products are not sold in Canada by JPW Industries, Inc.

Product Listing with Warranty Period

90 Days – Parts; Consumable items

1 Year – Motors; Machine Accessories

2 Year – Metalworking Machinery; Electric Hoists; Electric Hoist Accessories; Mobile Material Lifts; Woodworking Machinery used for industrial or commercial purposes

5 Year – Woodworking Machinery

Limited Lifetime – JET Parallel clamps; VOLT Series Electric Hoists; Manual Hoists; Manual Hoist

Accessories; Shop Tools; Warehouse & Dock products; Hand Tools; Air Tools

NOTE: JET is a division of JPW Industries, Inc. References in this document to JET also apply to JPW Industries, Inc., or any of its successors in interest to the JET brand.



JET TOOLS

427 New Sanford Road
LaVergne, Tennessee 37086
Phone: 800-274-6848

www.jettools.com