



Assembly and Parts List

Depth Stop for JWDS-2244/-2550 Drum Sanders



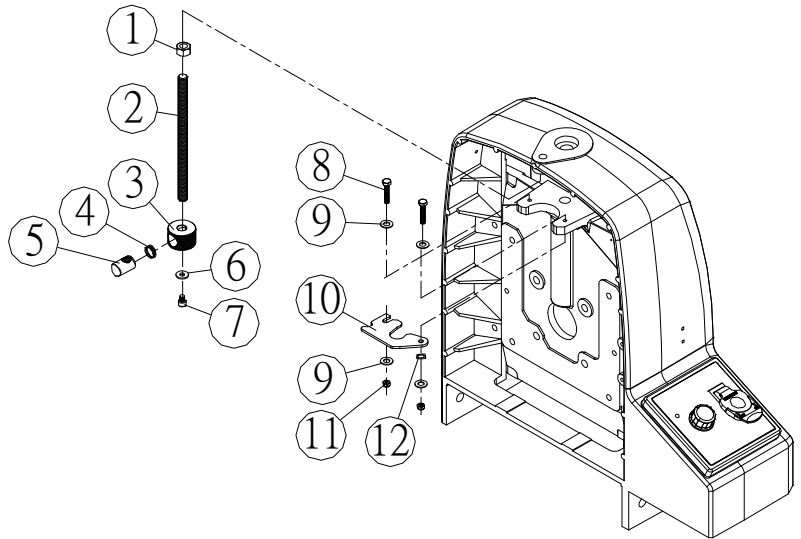
IMPORTANT SAFETY INSTRUCTIONS

- Read and understand entire owner's manual for your Drum Sander before attempting assembly or operation.
- Read and understand the warnings posted on the machine and in the manual. Failure to comply with all of these warnings may cause serious injury.
- Replace warning labels if they become obscured or removed.
- California Proposition 65 Warning: This product contains chemicals known to the State of California to cause cancer, or birth defects or other reproductive harm.

The depth stop is optional for JWDS-2244, provided standard with JWDS-2550.

Assembly

1. Thread the rod (#2) into hole of shroud, and tighten nut (#1) up against shroud.
2. Install plate (#10) using fasteners as shown.
3. See reverse side for operating instructions.



Index No.	Part No.	Description	Size	Qty.
	723553	Depth Stop Assembly (#1-12)		
1	JWDS2244-601	Special Nut		1
2	JWDS2244-602	Threaded Post		1
3	JWDS2244-603	Stop Nut		1
4	JWDS2244-604	Compression Spring		1
5	JWDS2244-605	Half Nut		1
6	TS-1550031	Flat Washer	5.2 x 16 x 1.4T	1
7	TS-1502031	Socket Head Cap Screw	M5-0.8P x 12L	1
8	TS-1482051	Hex Cap Screw	M6-1.0P x 25L	2
9	TS-1550041	Flat Washer	6.4 x 16 x 1.6T	4
10	JWDS2244-610	Stop Plate		1
11	TS-1541021	Nylon Lock Hex Nut	M6-1.0P	2
12	JWDS2244-612	Wave Washer	WW-6	1

JET

427 New Sanford Road
 LaVergne, Tennessee 37086
 Ph.: 800-274-6848
 www.jettools.com

Part No. M-723553

Edition 1 06/2018

Copyright © 2018 JET, a division of JPW Industries, Inc

Depth stop operation

The depth stop nut (A, Figure 1) provides a hard stop at final sanding depth. It ensures that the operator will not sand too deeply when he/she wishes to make multiple pieces the same final thickness.

1. Rotate handle to position drum at *final* sanding depth according to scale. (Figure 1 shows 7/8-inch final depth as example).
2. Press button on stop nut to slide nut into general position, then rotate nut until it firmly contacts bottom of plate (B). One rotation of nut = 0.10 in. of elevation.

CAUTION: The stop nut is designed to be used *below* the plate to allow full support when nut contacts plate. Using it above the plate may cause deflection as nut pushes into it.

3. Raise drum and perform sanding operation. Depending on the workpiece, multiple passes may be needed until final depth is reached and stop nut is contacted.

If stop assembly will not be used, loosen left screw (C) and rotate plate (B) out of the way (see inset). This allows free drum movement.

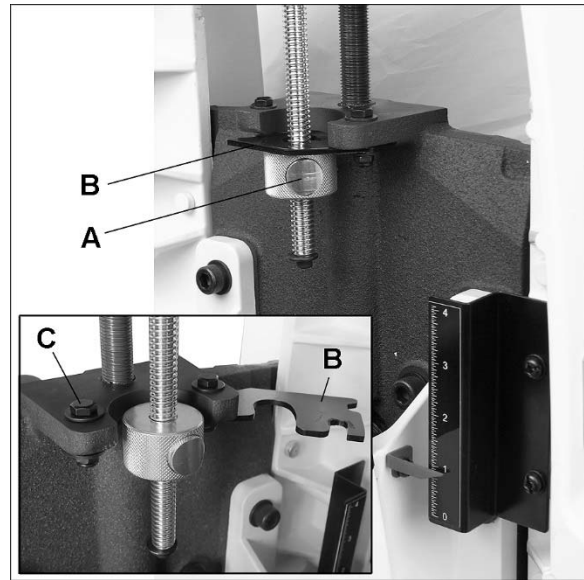


Figure 1

Replacement Parts

To order parts or reach our service department, call 1-800-274-6848 Monday through Friday, 8:00 a.m. to 5:00 p.m. CST. Having the Model Number and Serial Number of your machine available when you call will allow us to serve you quickly and accurately.

Non-proprietary parts, such as fasteners, can be found at local hardware stores, or may be ordered from JET.

Some parts are shown for reference only, and may not be available individually